

## BATTERY TERMINAL OPTIONS



DUAL  
**A**



SMALL POST  
**B**



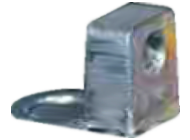
FLAT BLOCK  
**C**



LARGE POST  
**D**



**E**



**F**



OFF-SET "S"  
**G**



LARGE "L"  
**H**



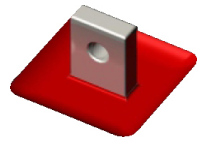
SMALL "L"  
**I**



UT  
**J**



UTL  
**K**



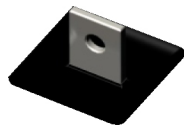
LEAD FLAG  
**L**



SPADE  
**M**



J TYPE  
**N**



COPPER FLAG  
**O**



J TYPE ADAPTER  
**P**

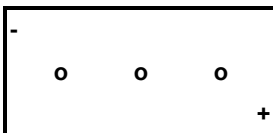


INSERT  
**Q**

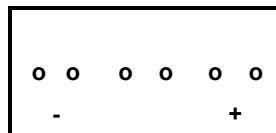


FRONT TERMINAL  
**R**

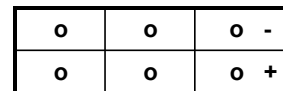
## BATTERY ASSEMBLY OPTIONS



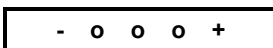
**A**



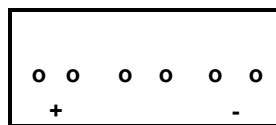
**C**



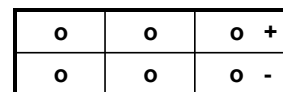
**E**



**B**



**D**



**F**

**6 Volt Batteries**

**12 Volt Batteries**

\* CP Centre Post