

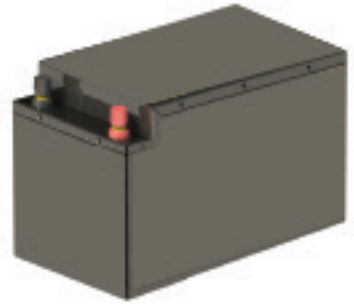


LION BATTERIES

LITHIUM IRON PHOSPHATE BATTERY

FEATURES Lithium Iron Phosphate (LiFePO₄).
The Safest Lithium Technology.
Integrated Battery Management System(BMS).

PERFORMANCE Long Cycle Life >4000cycles@80%DOD.
High Density,High Discharge Current,
HighTemperature Range.
Low Weight,Free Maintenance.
Fast Charging.
Environment Friendly.



LFP24-100

DATA SHEET

Electrical Parameters

Nominal Voltage	25.6V
Rated Capacity	100Ah
Energy	2560Wh
Resistance	≤30mΩ
Efficiency	0.98
Cycle Life	>4000cycles @1C,80% DOD
Self Discharge	2% per Month
Max. Cell in Series/Parallel	8S/1P

Mechanical Parameters

Dimension(LxWxH)	345x195x242mm
	13.58x 7.68x 9.53"
Weight	24kg
Terminal Type	120A Anderson or M8 Stud
Battery Housing	SPCC
Housing Protection	IP32
Cell Type-Chemistry	LiFePO ₄ Cell
SOC Display(Optional)	/

Discharge Parameters

Continuous Discharge Current	100A
Pulse Discharge Current	200A (<1S)
Recommended Volt. Disconnect	20V
BMS Discharge Cut-off Voltage	17.6V
Reconnect Voltage	21.6V
Short Circuit Protection	300-800us

Charge Parameters

Charge Method	CC-CV
Charge Voltage	28.4~29.2V
Recommended Float Voltage	27V
Recommended Charge Current	50A
Maximum Charge Current	100A
BMS Charge Cut-off Voltage	30V

Temperature Parameters

Discharge Temperature	-20 °C to 60 °C
Charge Temperature	0 °C to 60 °C
Storage Temperature	-10 °C to 35 °C
BMS High Temperature Cut-off	65 °C



1300 START ME | 1300 782 786 | info@lionbatteries.com.au | www.lionbatteries.com.au

NSW - Head Office 22 Stoddart Road, Prospect NSW 2148 **QLD** 316 Evans Road Salisbury QLD 4107

VIC Unit 1/16 Childs Road Epping VIC 3076 **WA** Unit 2/38 Discovery Drive, Bibra Lake WA 6163

ACT 36 Kendall Avenue, Crestwood NSW 2620